

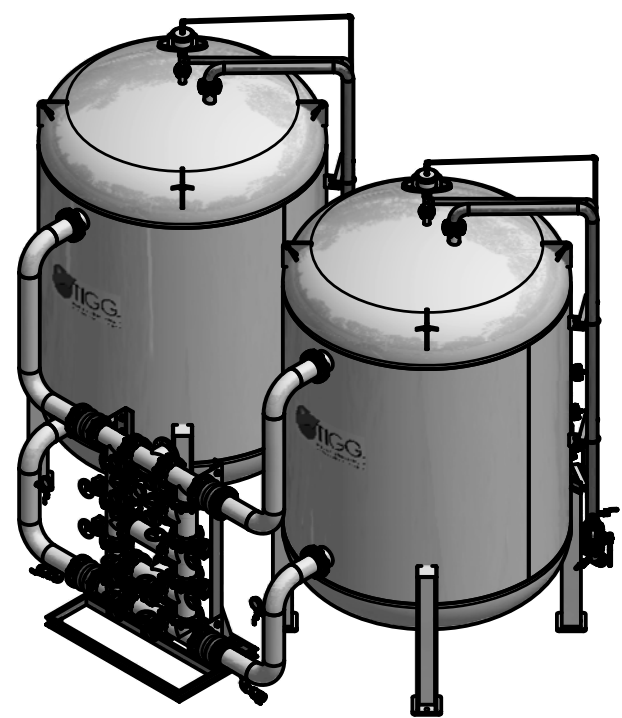
ELEVATION

PLAN

**SYSTEM SPECIFICATIONS:**

- MAXIMUM SERIES FLOW: 1000 GPM
- MAXIMUM PRESSURE: 125 PSIG
- MAXIMUM TEMPERATURE: 150°F
- EMPTY VESSEL WEIGHT: 14,000 LBS
- VESSEL OPERATING WEIGHT: 79,000 LBC
- PIPE RACK OPERATING WEIGHT: 12,000 LBS
- SYSTEM OPERATING WEIGHT: 170,000 LBS

FOR VESSEL INFORMATION SEE DRAWING # CP-20K-10-GA-001  
 FOR P&ID SEE DRAWING # CP-20K-10-PL-001



RELEASED FOR FABRICATION

SHEET 1 OF 2

REVISION HISTORY			
REV	DESCRIPTION	BY	DATE
4	UPDATE VESSEL TO CODE EDITION 2017	JB	11/21/2018
3	ADD 2" MANUAL VENT & EFFLUENT DRAIN	JB	3/21/14
2	ADD EXPANSION JOINTS	JB	1/10/13

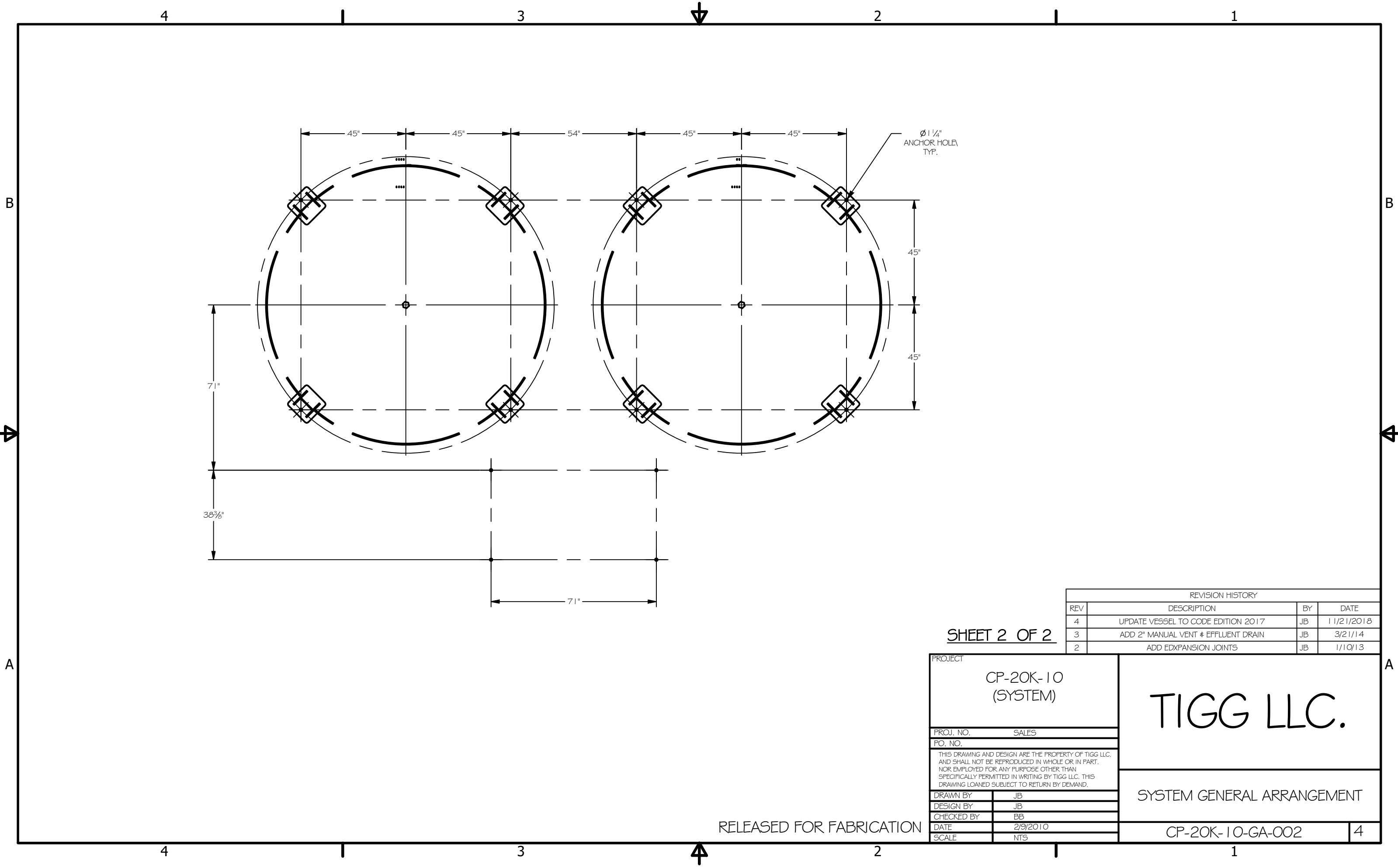
PROJECT	
CP-20K-10 (SYSTEM)	
PROJ. NO.	SALES
PO. NO.	
THIS DRAWING AND DESIGN ARE THE PROPERTY OF TIGG LLC. AND SHALL NOT BE REPRODUCED IN WHOLE OR IN PART. NOR EMPLOYED FOR ANY PURPOSE OTHER THAN SPECIFICALLY PERMITTED IN WRITING BY TIGG LLC. THIS DRAWING LOANED SUBJECT TO RETURN BY DEMAND.	
DRAWN BY	JB
DESIGN BY	JB
CHECKED BY	BB
DATE	2/9/2010
SCALE	NTS

TIGG LLC.

SYSTEM GENERAL ARRANGEMENT

CP-20K-10-GA-002

4



SHEET 2 OF 2

REVISION HISTORY			
REV	DESCRIPTION	BY	DATE
4	UPDATE VESSEL TO CODE EDITION 2017	JB	11/21/2018
3	ADD 2" MANUAL VENT & EFFLUENT DRAIN	JB	3/21/14
2	ADD EXPANSION JOINTS	JB	1/10/13

PROJECT		CP-20K-10 (SYSTEM)
PROJ. NO.	SALES	
PO. NO.		
THIS DRAWING AND DESIGN ARE THE PROPERTY OF TIGG LLC. AND SHALL NOT BE REPRODUCED IN WHOLE OR IN PART. NOR EMPLOYED FOR ANY PURPOSE OTHER THAN SPECIFICALLY PERMITTED IN WRITING BY TIGG LLC. THIS DRAWING LOANED SUBJECT TO RETURN BY DEMAND.		
DRAWN BY	JB	
DESIGN BY	JB	
CHECKED BY	BB	
DATE	2/9/2010	
SCALE	NTS	

TIGG LLC.

---

SYSTEM GENERAL ARRANGEMENT

---

CP-20K-10-GA-002

RELEASED FOR FABRICATION