

ELEVATION

PLAN

N11	SAMPLE - 4	2" 150# FLANGE	SIDE SHELL
N10	SAMPLE - 3	2" 150# FLANGE	SIDE SHELL
N9	SAMPLE - 2	2" 150# FLANGE	SIDE SHELL
N8	SAMPLE - 1	2" 150# FLANGE	SIDE SHELL
N7	DRAIN	2" 150# FLANGE	BOTTOM HEAD
N6	VENT	3" 150# FLANGE	TOP HEAD
N5	CARBON OUT	4" 150# FLANGE	BOTTOM HEAD
N4	CARBON OUT	4" 150# FLANGE	SIDE SHELL
N3	CARBON IN	4" 150# FLANGE	TOP HEAD
N2	OUTLET	8" 150# FLANGE	SIDE SHELL
N1	INLET	8" 150# FLANGE	SIDE SHELL
M2	MANWAY	20" 150# FLANGE W/ BLIND	SIDE SHELL
M1	MANWAY	14"x18" ELL. MANWAY	TOP HEAD
MARK	SERVICE	DESCRIPTION	LOCATION

NOZZLE SCHEDULE

REVISION HISTORY

REV	DESCRIPTION	BY	DATE
0			

VESSEL STANDARDS:

VESSEL MATERIAL: SA-516-70

- HEAD THICKNESS: 5/8" HEAD TYPE: 2:1 ELLIPTICAL
- SHELL THICKNESS: 5/8"

COATINGS:


- INTERIOR LINING: PLASITE 4110 - DFT 35-45(MAX)
- EXTERIOR COAT: EPOXY BASE W/ URETHANE TOP

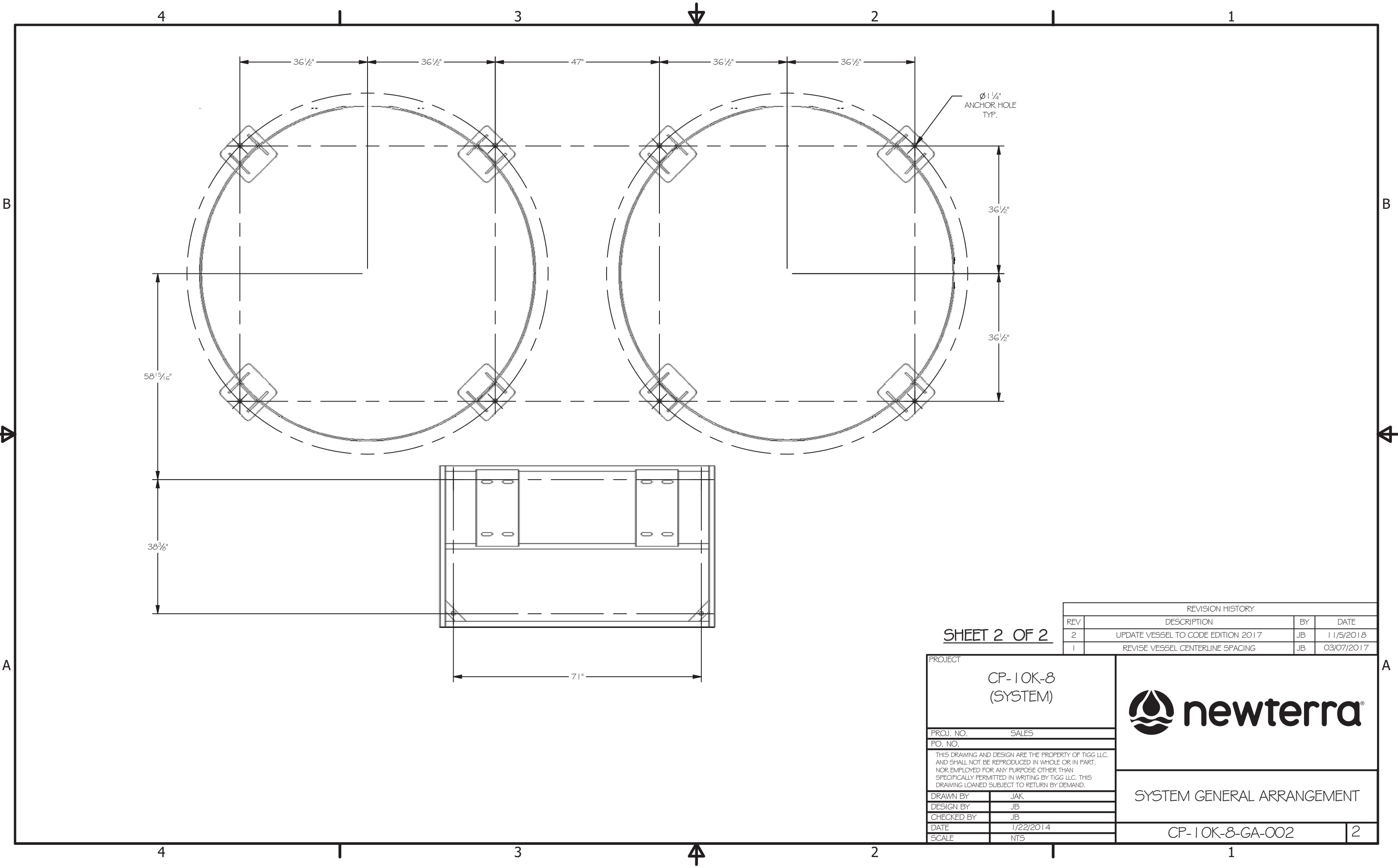
INTERNALS:

- 304 STAINLESS STEEL

VESSEL PROPERTIES:

- MAWP: 125 PSIG / -15 PSIG AT 150 f
- EMPTY SHIP WEIGHT: 25,500 LBS
- TOTAL VESSEL VOLUME: 1,866 FT³

PROJECT		CK-40K-12		 newterra [®]	
PROJ. NO.		STANDARD			
PO. NO.					
THIS DRAWING AND DESIGN ARE THE PROPERTY OF TIGG LLC. AND SHALL NOT BE REPRODUCED IN WHOLE OR IN PART. NOR EMPLOYED FOR ANY PURPOSE OTHER THAN SPECIFICALLY PERMITTED IN WRITING BY TIGG LLC. THIS DRAWING LOANED SUBJECT TO RETURN BY DEMAND.				GENERAL ARRANGEMENT	
DRAWN BY		JB			
DESIGN BY		JB			
CHECKED BY		BB			
DATE		4/12/2017		CP-40K-12-GA-001	
SCALE		NTS			
				0	



SHEET 2 OF 2

REVISION HISTORY			
REV	DESCRIPTION	BY	DATE
2	UPDATE VESSEL TO CODE EDITION 2017	JB	11/5/2018
1	REVISE VESSEL CENTERLINE SPACING	JB	03/07/2017

PROJECT	
CP-10K-8 (SYSTEM)	
PROJ. NO.	SALES
PO. NO.	
THIS DRAWING AND DESIGN ARE THE PROPERTY OF TIGG LLC, AND SHALL NOT BE REPRODUCED IN WHOLE OR IN PART, NOR EMPLOYED FOR ANY PURPOSE OTHER THAN SPECIFICALLY PERMITTED IN WRITING BY TIGG LLC. THIS DRAWING LOANED SUBJECT TO RETURN BY DEMAND.	
DRAWN BY	JAK
DESIGN BY	JB
CHECKED BY	JB
DATE	1/22/2014
SCALE	NTS



SYSTEM GENERAL ARRANGEMENT

CP-10K-8-GA-0022